

Facilities

The Issues:

Maintenance of the level of current facilities in the Parish, in particular the local shops and medical facilities.

Improvement of the social facilities for all ages with consideration of a parish focal point.

Access to information about clubs and events being held.



Background:

1) The perception is that facilities have worsened over the last 10 years or so.

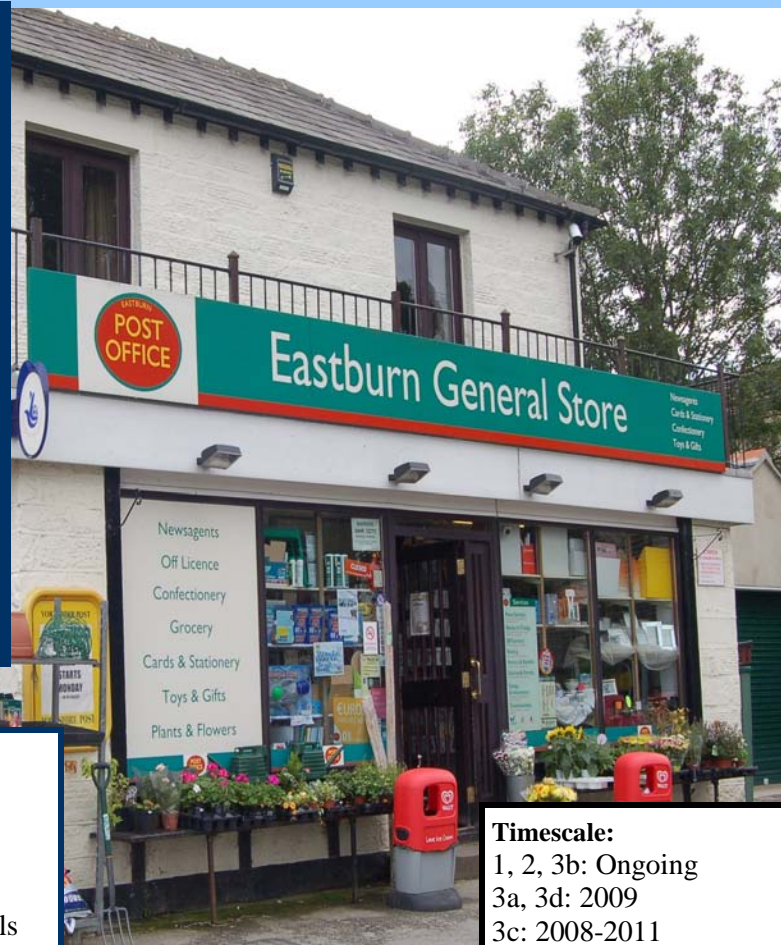
Whilst the local shops are used by residents, 50% of goods available in the parish are bought elsewhere mainly at supermarkets where there is a greater choice and it is easier to park.

2) A majority of respondents had no difficulty in accessing the various medical facilities required.

3) The provision of a focal point was identified by the parish plan questionnaire along with the inadequacy of social facilities for all age groups over 6 years old.

Action:

- 1) Consult with service providers e.g. BMDC, PCT, Shop owners.
- 2) Continue to monitor access to medical services.
- 3a) Establish a working party to further the provision of a community focal point.
- 3b) Support existing clubs and organisations.
- 3c) Promote the provision of other activities for all ages.
- 3d) Centralise information about clubs and activities in the area, e.g. in newsletters and on websites.



Partners:

- Parish Council
- Shop Owners
- BMDC (particularly with Post Offices in mind)
- Parish Church / Methodist Chapels

Timescale:

- 1, 2, 3b: Ongoing
- 3a, 3d: 2009
- 3c: 2008-2011