

STEETON-WITH-EASTBURN PARISH COUNCIL

Working for the community

November 2011

Your Councillors

- Eastburn
- Steeton

Derek Callon
652990

Gladys Emmott
653112

Karen Pickard
631015

Chairman
David Mullen
654634

Vice-Chairman
Su Thompson
653070

Pam Blagden
652974

Elisabeth Pugh
656672

Roger Lambert
657060

Dorothy Marriott
655435

Hilda Townend
654407

John Weller
0798 4633587

Ward Councillors

Michael Kelly
07531 031657

Andrew Mallinson
07971 274785

Adrian Naylor
07803 503643

Community Hub Steps Forward

Steeton with Eastburn's proposed new Community Hub has taken a giant step forward with the granting of planning approval in October. The approved plans are available for information on the parish council website.

The modern building design proposed by the project architect, John Wharton, has been supported by the planning authority. Additionally, approval has been given for other site strategy improvements including improved pedestrian and vehicle safety by widening the junction of Stone Grove with Skipton Road, relocation of the children's play equipment to a safer location within the site, and the creation of a small number of car parking spaces.

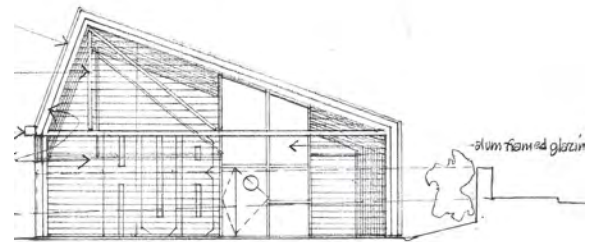
Funding for the project is also successfully moving forward. Eastburn based engineering firm, Cinetic Landis, has expressed their enthusiasm for the project by donating £10,000. The Parish Council's work in seeking other grant support is also proving successful – and secured funds now stand at £125,000 against a project budget of £200,000. Decisions on two further grants that will take us near the total needed are expected in November.

Have you had your say in the detail design of the building? The project is now at the stage where the designers are considering the details of the internal arrangements – and they want to know what you want.

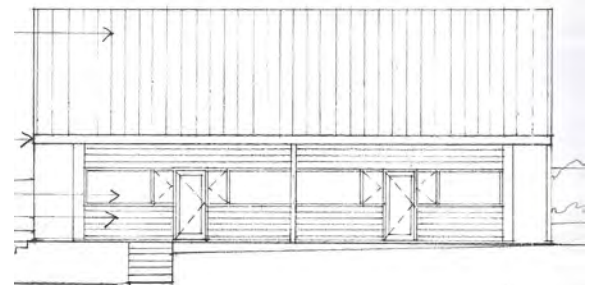
THIS IS A CALL FOR ANYONE WITH AN INTEREST IN USING THE BUILDING TO TELL US WHAT THEIR NEEDS WOULD BE.

Please contact the Parish Clerk (details on the back page of this newsletter) if you wish to see the plans, or if you wish to have a talk with the working group. We are keen to listen to you, and to take account of your comments.

Roger Lambert



WEST



NORTH

Bulb planting at Eastburn



Two thousand daffodil bulbs have been planted on the sloping bank at Eastburn Playing Field. The photograph shows the parish council's contractors, Greenfingers Garden Services, planting the bulbs.

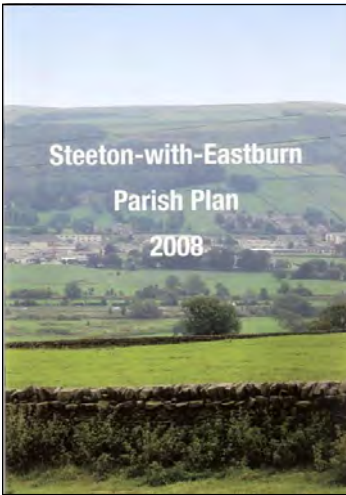
John Hargreaves

Members of the parish council were deeply saddened by the news of John Hargreaves' death on 12 October 2011.

A minutes silence was held at the meeting on the day of his death as a mark of respect. John served the community, as a parish councillor, for 38 years, retiring in 2011 due to ill-health. John was a valued member of the council and his commitment and dedication to the community has been recognised in a plaque on one of the benches in Chapel Road Recreation Ground.



Parish Plan Review



In April 2007 every address in the villages of Steeton and Eastburn received a questionnaire, the answers to which would provide the basis for a Parish Plan. Over 450 were completed, 26% of those sent out, reflecting the high level of community identity and showing how the quality of life found in the village is valued.

The Parish Plan was formulated and put into practice in 2008.

During July and August 2011 a working party consisting of councillors who had not been involved in the original work, reviewed what progress had been made.

It was found that over 85% of the targets set had been put in place, a tremendous achievement.

The major issues identified through the questionnaires were;

- ◆ The establishment of a community facility.
- ◆ Traffic and road safety
- ◆ Development.

Village Focal Point

Planning permission has been granted for the Community Hub which will provide a meeting point for clubs and societies already in existence and should help in the creation of others, to provide social facilities for all age groups. It is hoped that a library delivery drop off point and internet access will form part of the services provided by the Hub making it a centre for information and inter-generational interaction. The Parish Council is encouraging the formation of more local activities through funding and leadership, whilst encouraging outside groups to expand their scope.

The expansion and development of the outdoor play and leisure areas in Eastburn have been welcomed and the Hub will ensure that there are year round activities for young people.

A new system of delivering the Newsletter will ensure that information about all activities and facilities will reach every household.

Traffic and Road Safety

The issues identified were mainly concerned with traffic congestion,

speeding and inconsiderate parking. The Parish Council is working with outside authorities to address these problems.

The Neighbourhood Policing Team has been encouraged to enforce speeding limits and to support the Speedwatch initiative. They are also active in areas where inconsiderate parking is a problem, ensuring that drivers are warned of the consequences of their actions.

Consultation with BDMC has resulted in the extension of the 30mph speed limit and the introduction of more 20mph areas. Work with the Rights Of Way officers and the Planning Department is ensuring that a footpath and cycleway is part of the housing development plan.

The PC has also worked with Transdev to explore the possibility that buses and trains can be timetabled to coincide. This would help to reduce the traffic congestion.

Although much has been achieved in this area, a great deal is still ongoing and further improvements will be made.

Development

The PC has demonstrated, in the time commitment and responses submitted to Planners, that all planning applications are considered for the benefit to and the possible impact on the community.

Planners and developers have been encouraged to provide new or enhance existing infrastructure to take account of any knock on effect in terms of safety or lack of facilities. Any development should be linked to promoting a sustainable community and encourage development of employment opportunities.

Work has also been carried out in partnership with the Conservation team to monitor the style of development in the conservation area to preserve the distinctive character of the village.

The PC has formed working relationships with BMDC Planning, Parks and Landscapes, Environment Agency and others to ensure that the natural and historical characteristics are maintained and enhanced.

Summary

Whilst a large percentage of the targets have been met, much work is ongoing. Links and partnerships have been made which will allow long term objectives to be carried out. Comments and suggestions will be gratefully received, in order to ensure that the PC can fully represent the views and wishes of the whole community.

Elisabeth Pugh

Aire Valley Sewer

A working group has been formed comprising of representatives of the Parish Councils in the lower Aire Valley. It was felt that there were many issues in common, not least of which was the Aire Valley Sewer with all its attendant problems. The Chairs of the Parish Councils felt that we needed to take action, and get people to actually sit up and listen to our concerns regarding sewerage issues, and felt that by uniting on this issue we could not be accused of NIMBY ism. We were all aware that under the new planning framework there was potential for us to have large scale housing development thrust upon our communities. Little did we know how big the potential was, in Steeton with Eastburn and Silsden we have been told that there could possibly be 2500 houses built between now and 2026, and the possibility for the same number in the South Craven Villages. As part of the process we started a dialogue with both Yorkshire Water and the Environment Agency. Many meetings were held, both on site in the fields at the bottom of Thornhill Road, and more formally at various venues. The topic was always the state of the sewer running down the valley and the problems that issued from it. We have had positive outcomes from our meetings, Yorkshire Water has undertaken a visual survey of the exterior of the pipe and done a sonar survey of the interior. They will be providing the results of these surveys to us soon.



Parish councillors and contractors from Mouchel at the start of the monitoring process.

Yorkshire Water have also now started, in partnership with Mouchel, doing a survey to measure the flow rates down both the main sewer and also the many branches that feed into it.

David Mullen, Chairman

Neighbourhood Police Team Update

The NPT has seen some staffing changes in recent weeks – PC Allan Jacks has joined the team and will have particular responsibility, alongside PC Ian Shreeve, for the Craven Ward area. Allan is an experienced officer who is keen to get involved in the local community and ensure that Steeton and Eastburn remain such a pleasant and safe place to live.

I am pleased to say that Steeton and Eastburn have relatively low crime levels but recognise that if you are one of the victims of crime this will give you little comfort. The most prominent crime types in the area are thefts from garages and sheds. We often store expensive equipment in our garages and sheds but don't consider any type of security other than a small padlock. There are vibration sensors and alarms on the market at a relatively low cost which may prevent you losing valuable items. All our officers have been trained to provide crime prevention advice and will willingly visit your homes to review your home security. Please contact us on the below number if you would like to take advantage of this.



Fire damage at Eastburn

We have recently added the Eastburn Playing Fields as one of our local priorities. As some of you will be aware the new play equipment and picnic tables have suffered damage including graffiti and fire damage. We will be concentrating on preventing further damage to the equipment but also identifying those

responsible. Please contact us if you have any information on this, or any other crime.

Other initiatives we have recently been involved in have included the stopping and checking of vehicles believed to be involved in the scrap metal trade. We have received a number of reports of vehicles in the Craven area collecting scrap metal over recent months – the increase is largely due to the high price of scrap at the present time. Our initiative has shown that the vast majority of traders are trading legally and with the appropriate licences. However, a small number are acting outside the law. If you are unsure of a vehicle or person in your area, please obtain vehicle registration details where possible and report the matter to the Police – officers will attend and check the vehicle and occupants wherever possible but we also gain valuable intelligence regarding persons working within the area.

We have also recently carried out a number of 'test purchase' operations in the ward aimed at identifying licensed premises which may have been selling alcohol to under-18's. I am pleased to say that all of the licensed premises in Craven Ward passed the test.

Finally, we are always keen to listen to the concerns of residents in the villages. We attend all Parish Council meetings and Neighbourhood Forums. The officers are regularly in the villages and I would urge you to take the opportunity of speaking with them. The NPT can be contacted at Ilkley Police Station on Tel: 01274 475301 –the number will revert to voicemail out of office hours as officers will be on patrol but we will return your call as soon as possible and in any case within 24hours.

Inspector Susan Sanderson



West Yorkshire
Fire & Rescue Service

The West Yorkshire Fire & Rescue Service is pleased to be working with your Parish Council in a new joint venture aiming to make West Yorkshire a safer place to live. As well as attending incidents we also work in the community to promote fire and road safety education and prevent fires occurring. Factors that increase the risk of you being injured in a fire in the home may include:

No working smoke detectors, having a smoker in the household, your age or someone with physical impairment.

If you would like further information, you can either visit our website www.westyorkfire.gov.uk or contact your local fire station. West Yorkshire Fire and Rescue Service recommend that all households have working smoke detectors and have listed our top ten tips for fire safety in the home below.

10 Tips For Better Fire Safety

- 1. Working Smoke Detectors** - You are 3 times more likely to die in a fire without them. Householders should ensure they have Smoke Alarms correctly installed. The Fire service can fit these for people who are vulnerable or at higher risk from fire in the home.
- 2. Have a Fire Plan** - Every household should have one and everyone should know what to do in case of a fire emergency. Discuss this with the fire officer during the check.
- 3. Have A Night-time Routine** - Make sure that appliances that can be, are turned off, doors are closed; candles and cigarettes are put out.
- 4. Have A Clear Route Out** - Keep all exits routes clear. Blocking these could hinder your escape.
- 5. Have Keys Available Near Exit Doors** - Everyone in the household should know where they are. Have spare sets discreetly placed near exit routes for such an emergency.
- 6. Overloaded Sockets Are A Problem** - Check yours today, remember electric cable can wear if placed under carpets.
- 7. Where Are Lighters And Matches?** - Put these somewhere safe. Young children love to experiment! Lighters and matches are not toys.
- 8. Chip Pan Safety** - When cooking NEVER leave pan unattended, don't overfill and NEVER try to put out a chip pan fire with water.
- 9. Know How To Make An Emergency call** - Everyone should know how to make that call. If you need help, make that call. We are here for you.
- 10. Review Your Fire Safety Plan At Regular Intervals** - Finally check your safety regularly. Update everyone and look at the literature. If you need a further check or advice from us, please call.

REMEMBER YOUR SAFETY IS OUR BUSINESS

Making West Yorkshire Safer
www.westyorkfire.gov.uk

Flashing Speed Indicator Signs

After years of lobbying, the parish council can announce that flashing speed indicator signs will be installed in both Steeton and Eastburn to reinforce the speed limits. Information from Community Speedwatch and traffic speed sensors also informed the decision. A senior Highways Engineer from Bradford Council confirmed at the October parish council meeting that funds have been made available through the Keighley Area Committee to provide the signs. The location and type of signs will be the subject of consultation over the coming months.

Parish Council Meetings

Parish Council meetings are usually held on the second Wednesday of each month starting at 7.30p.m. The meetings are at Steeton Bowling Pavilion from November through to April and at Eastburn Junior and Infant School May through to October. Members of the public are always welcome to attend the meeting and there is time set aside for members of the public to address the council.

Agendas for the meetings are available in the notice-boards and on the parish council website.

Future meeting dates:

9 November 2011

14 December 2011

11 January 2012

8 February 2012

Welcome to Steeton School

"This is a good school which provides outstanding care, guidance and support. These contribute to good levels of spiritual, moral, social and cultural development and harmonious relationships between pupils. Pupils like school. The large majority show excellent attitudes in lessons and work hard to do their best. Behaviour is outstanding; pupils are keen to help others and they show respect and display good manners at all times." Ofsted February 2011

Our School

Steeton Primary School is the school of choice for many families, not only in Steeton but also from neighbouring villages and the nearby town of Keighley.

Aims of Steeton Primary School are to:

Prepare our children academically, physically, emotionally, morally, socially and spiritually for subsequent stages of education and their lives beyond in a technologically advanced society.

Develop the all round potential of every pupil within a broad and balanced curriculum so that they may all achieve the best of which they are capable. Create a happy and caring atmosphere, which values the contribution of all members of the school, parents and wider community.

Show commitment to a policy of equal opportunities regardless of gender, race or ability.

Creative Curriculum From September 2010 we have taken a thematic approach to teaching the majority of subjects in school. Through this thematic or topic based approach (usually changed each half term) we have been able to provide maximum interest and relevance for our children whilst still concentrating on the National Curriculum skills that we are required to teach. Examples of a creative approach to teaching last year included a Yr 3/4 'Who do you think they were?' topic where the children carried out an archaeological dig after an ancient helmet was 'found' in our wild area. The objects discovered by the children led to an investigation in which they were found to be Anglo Saxon. This led to research into who the Anglo Saxons were and where they came from. This theme also included an Anglo Saxon museum put on for parents by the children and an Anglo Saxon banquet to celebrate their learning at the end of the topic.

Year 5/6 took part in a Manorlands 'Mind your own Business' competition where groups of children were given £10 to invest in business opportunities to make as much profit as possible to raise money for Manorlands Hospice. The children came up with innovative and exciting projects which resulted them in winning an award from Manorlands for the primary school that had raised the most money – nearly £2000. One of the highlights for Yr 1/2 was the visit to school of exotic animals from the 'Zoolab'. This year's themes will include Monsters, The Olympics, Celebrations and mini topics on The Queen's Jubilee and the Sinking of the Titanic. You may also have seen our Key Stage 2 children out and about in the village, researching their recent topic on Steeton.

If we feel that a certain subject or skill does not fit into the theme for that

**Notice a problem?
Are there holes in the road, uneven pavements,
lamp standards not working?
Ring Bradford Council
01274 431000
or use their website: www.bradford.gov.uk
to report it.**

half term, then it is either taught separately as a standalone subject or it is slotted into a more relevant theme.

We have provided every teacher with the freedom and creative environment to enthuse and enliven our children so that learning becomes relevant to them. This means that both pupils and teachers can respond to local and world events and issues of interest to them and learn together in an exciting and passionate environment.

Educational Visits

Another important part of our philosophy of Education is the fact that young children learn best from first hand experience. In class, we try to make our work as practical as possible but often the best opportunities lie outside the classroom. It is our policy to use the local and wider environment to enrich the experience of our children. We are fortunate to have good local transport facilities including the opportunity to travel by bus and train at off peak rates. We are conscious that some visits can be quite expensive, so we try to balance these with other much less expensive ones.

Academic Achievement

Our end of Key Stage test results are at or above the national averages. Again, we are monitoring our performance in these tests and adapting our teaching accordingly in the search for consistently high standards.

Key Stage 1		Reading	Writing	Maths	Science	
2011	2B+	80.0%	70.0%	73.3%	95.4%	L2+
	L3+	35.0%	28.0%	30.0%	40.0%	L3+
National	2B+	72.0%	60.0%	73.3%	89.00%	L2+
	L3+	26.0%	12.0%	20.0%	21.00%	L3+

Key Stage 2		Maths	English	Science	
2011	L4+	88.0%	88.0%	93.0%	
	L5	28.0%	47.0%	41.9%	
National	L4+	80.0%	81.0%	85.0%	
	L5	35.0%	29.0%	35.0%	

Although good test results are important, they are not the only indicators of a good school. The governors, teaching and non-teaching staff, parents and children work as a team to provide a friendly and supportive atmosphere which enables us to pursue our aim of helping ALL children to do their best.

The school is one of a cluster of cross-border feeder primary schools serving South Craven School. Most pupils progress to South Craven School which is a mixed comprehensive school and Technology and Engineering College. Some pupils also progress to the new University Academy of Keighley. Each year, some pupils also progress to the Boys' or Girls' selective Grammar Schools in Skipton, North Yorkshire.

We hope this gives you a taste of life at Steeton Primary School. If you are currently in the process of choosing a school for your child please do not hesitate to contact the school on 01535 653315, either for a chat with the Headteacher, Mr John Cooper, or to arrange a visit to view the school and all we have to offer, including our extensively refurbished Early Years Unit. You can be assured of a warm welcome!
Kevin Wheeler, Deputy Headteacher

Newsletter Deliveries. Copies of the parish council newsletters are delivered by a leaflet distribution company. Copies are available in Steeton Post Office and it can be downloaded from the parish council website.

Contact the parish council: Clerk: Cheryl Brown,
Tel: 01535 636682

6 The Fold, Lothersdale, Keighley BD20 8HD
e-mail: steeburnpc@btinternet.com